

*As trinta letras do alfabeto tibetano*

ཀ་ ཁ་ ག་ ང་

ཅ་ ཆ་ ཇ་ ཉ་

ཏ་ ཐ་ ད་ ན་

པ་ བ་ ཇ་ མ་

ཙ་ ཛ་ ཝ་ ཞ་

ཟ་ འ་ ག་ ལ་

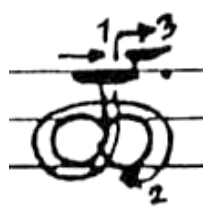
ཤ་ ས་ ཉ་ མ་

ཏ་ ཨ་

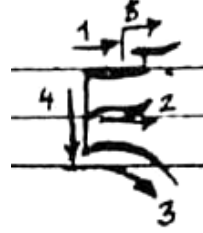




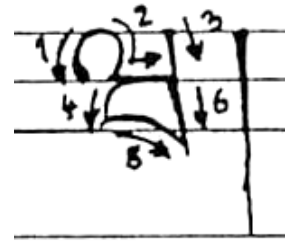
Tsa



Tsh'a



Dza



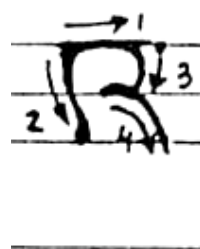
Wa



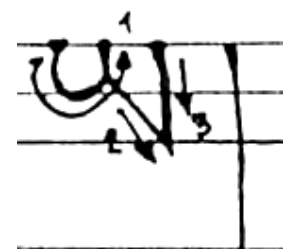
Chiä



Sa



hä



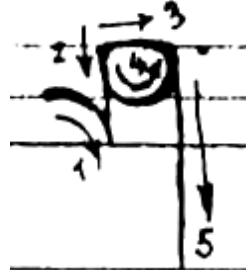
Ya



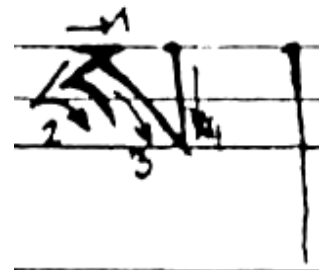
Ra



La



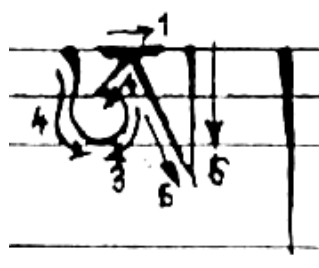
Chia



Sa



Ha'



A



i



u



e



o